

1 2 3 4 5 6 7 8

A A

B B

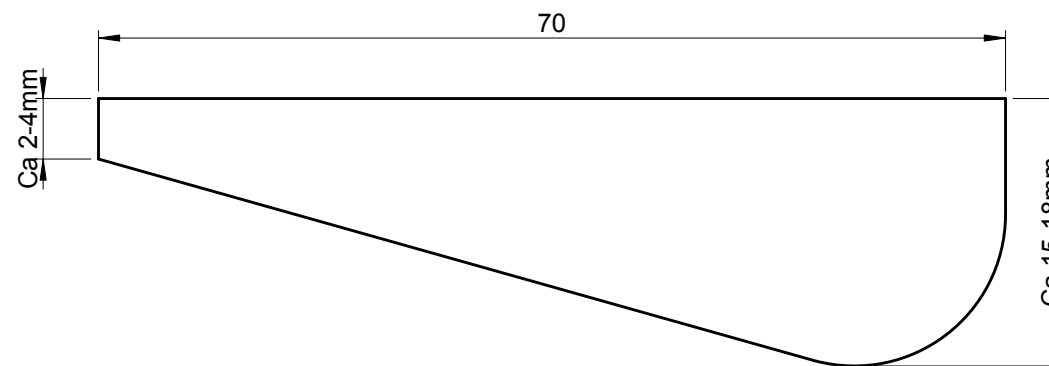
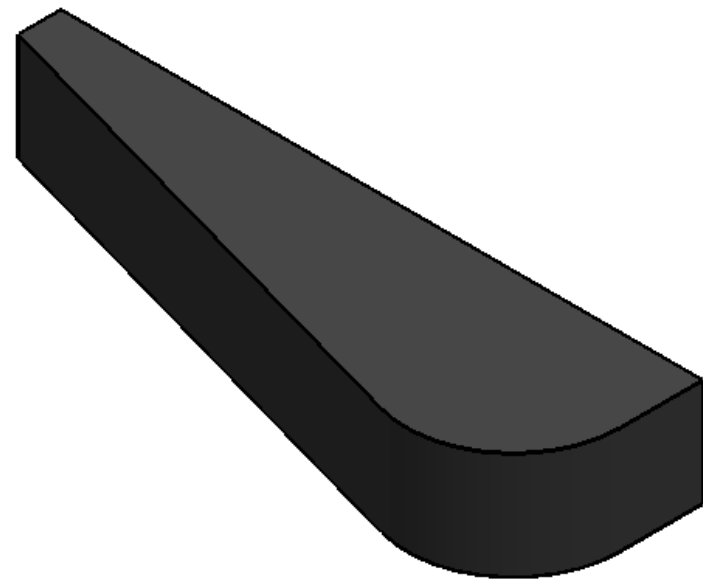
C C

D D

E E

1 2 3 4 5 6 7 8

F F



**NOTES:**

- UNLESS OTHERWISE SPECIFIED DIMENSIONS ARE IN MILLIMETRES  
ALL STANDARDS REFERRED TO SHALL BE THE CURRENT ISSUE.
- PROCESS SPECIFICATION AS PER MDP REPORT FOR  
REFERRED MATERIAL NUMBER.
- UNLESS OTHERWISE SPECIFIED:  
BREAK EXTERNAL EDGES, FILLET INTERNAL EDGES.

Tolerancing according to ISO 8015, ISO 1101	Dimensions without individual tolerance indications: ISO 2768-mK					
	See ISO 2768 part 1 and 2 for more information		ISO 2768-m		External radii and chamfer heights	
	ISO 2768-K (features)		Range	Tol	Range	Tol
$\sqrt{Ra\ 3,2}$ (✓)	Range	⊥	≡	∠		
	≤ 10	0,05			0,5-3	±0,2
	>10-30	0,1	0,4	0,6	>3-6	±0,5
	>30-100	0,2			>6-30	±0,2
	>100-300	0,4	0,6	0,2	>30-120	±0,3
$\begin{matrix} -0,4 \\ -0,8 \\ +0,8 \\ +0,4 \end{matrix}$	>300-1000	0,6	0,8	0,8	>120-400	±0,5
ISO 13715	>1000-3000	0,8	1	1	>400-1000	±0,8
					>1000-2000	±1,2
					>2000-4000	±2
					>10-50	±0°30'
					>50-120	±0°20'
					>120-400	±0°10'
					>400	±0°05'

Title		Item 5 Kile 70 x 10mm Kile for kniv		Document no.	NA	Doc. ver.	00	ECO no.	NA
Modified by	AØ	Originator	AT	Release date	17.01.18	Reason for issue	1st rev		
Checked by	AT	Material no. (part)	5	Plant	TIP	Estimated Weight			
Approved by	TT	Material spec.	NA		Size	A3	Sheet no.	1 of 1	